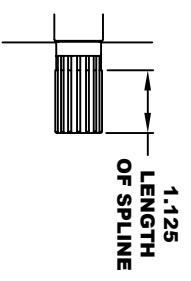
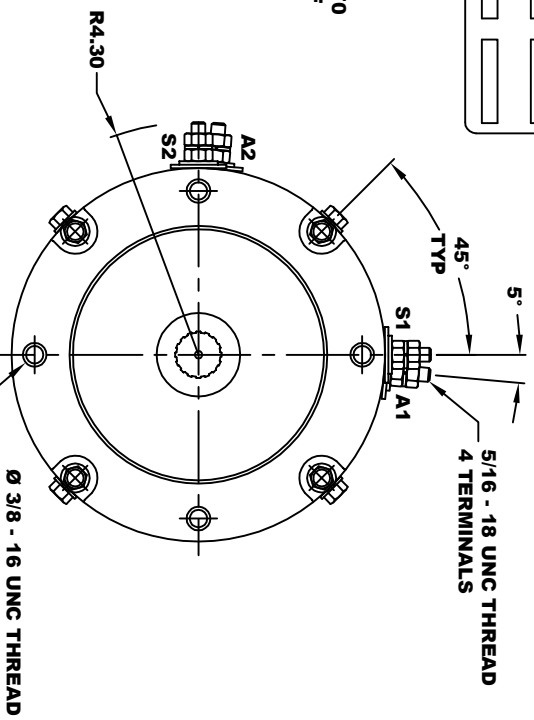
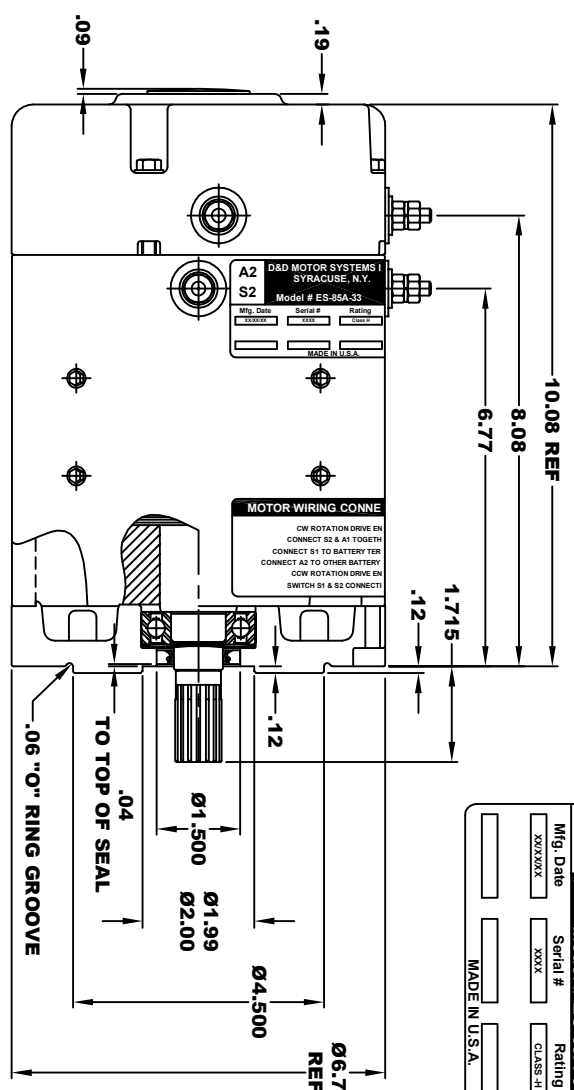
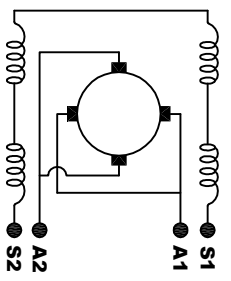


<b>A2</b>	<b>D&amp;D MOTOR SYSTEMS INC.</b>			<b>A1</b>
<b>S2</b>	<b>SYRACUSE N.Y.</b>			<b>S1</b>
<b>Model # ES-85A-33</b>				
Mfg. Date	Serial #	Rating	Voltage	
XXXX/XXXX	XXXX	CLASS "H"	38 / 48	
MADE IN U.S.A.				

**TORQUE SPECIFICATION FOR  
POWER CABLE SECURING TOP NUTS**  
5/16-18 UNC - 110 IN / LBS MAX



**ELECTRICAL WIRING DIAGRAM**



**MOTOR WIRING CONNECTIONS:**  
**CW ROTATION DRIVE END**  
 CONNECT S2 & A1 TOGETHER  
 CONNECT S1 TO BATTERY TERMINAL  
 CONNECT A2 TO OTHER BATTERY TERMINAL  
**CCW ROTATION DRIVE END**  
 SWITCH S1 & S2 CONNECTIONS

**D & D MOTOR SYSTEMS INC**

**MOTOR OUTLINE**

<b>EXTERNAL INVOLUTE SPLINE DATA</b>	
TYPE OF FIT	SIDE FIT
NUMBER OF TEETH	16
SPLINE PITCH	20 / 40
PRESSURE ANGLE	30°
BASE DIAMETER	.692 REF
PITCH DIAMETER	.800 REF
MAJOR DIAMETER (h11)	.850 - .800
FORM DIAMETER	.746
MINOR DIAMETER (h14)	.686 -

**MOTOR WEIGHT 49 LBS**  
**CLASS "H" INSULATION**  
**PERFORMANCE SPEC: 33**

THIS PRINT IS THE PROPERTY OF D&D MOTOR SYSTEMS INC.  
 DO NOT SCALE  
 WORK TO DIMENSIONS  
 TOLERANCES UNLESS OTHERWISE SPECIFIED ARE AS FOLLOWS  
 .XX----- .01  
 .XX----- .005  
 .XX ROUGH CASTING ----- .03  
 HOLES ----- .001 / +.006  
 ANGLES ----- 0-30°

SIZE	DRAWN DATE	RELEASE DATE	DWG NO. / PART NO.	REV
B	6-19-24		ES-85A-33	
SCALE	STF	DRAWN BY	MJG	REV DATE