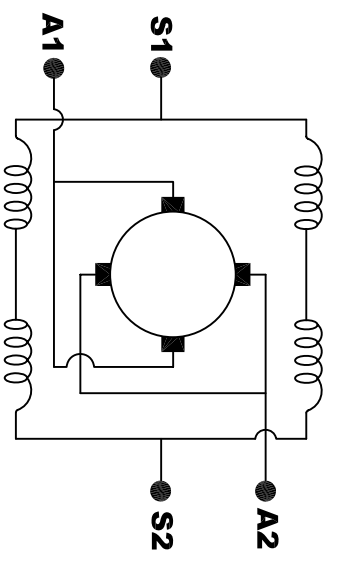
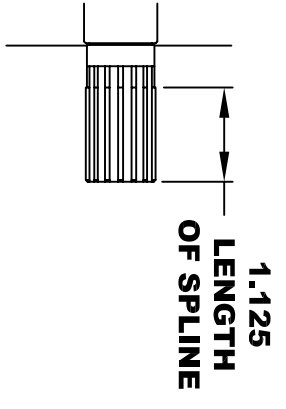
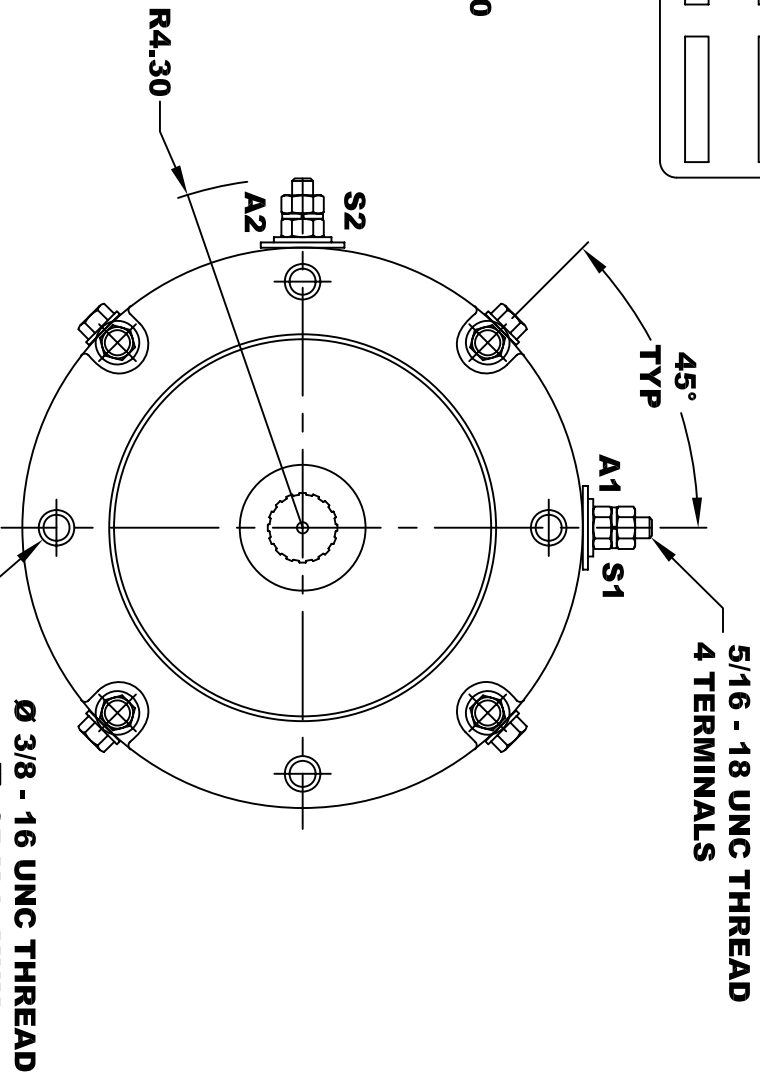
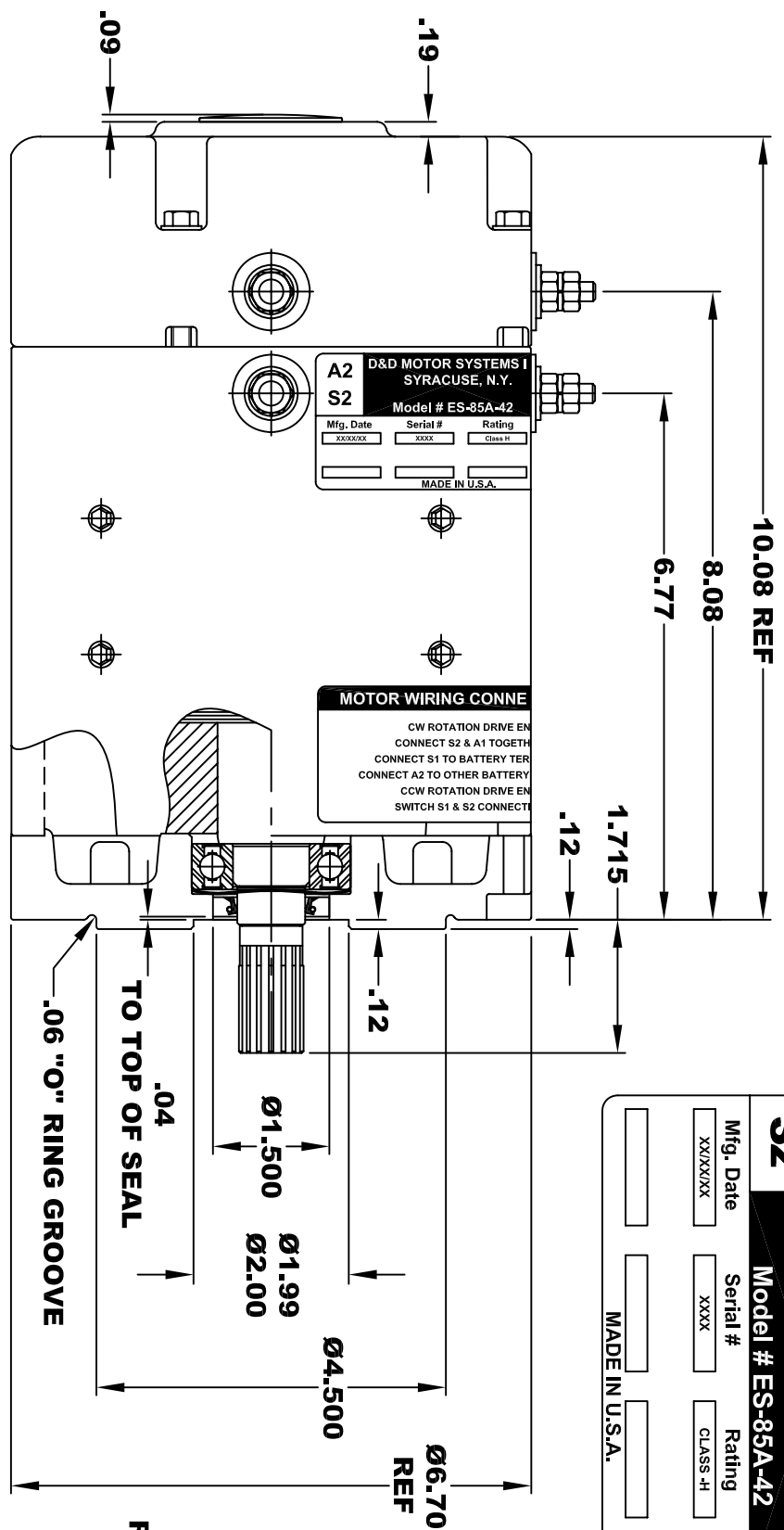


**TORQUE SPECIFICATION FOR  
POWER CABLE SECURING TOP NUTS  
5/16-18 UNC - 110 IN / LBS MAX**

<b>D&amp;D MOTOR SYSTEMS INC. SYRACUSE N.Y.</b>			
<b>A2</b>	<b>S2</b>	<b>A1</b>	<b>S1</b>
<b>Model # ES-85A-42</b>			
Mfg. Date	Serial #	Rating	Voltage
XXXXXX	XXXX	CLASS H	36 / 48
MADE IN U.S.A.			



**ELECTRICAL WIRING DIAGRAM**

**MOTOR WIRING CONNECTIONS:**  
**CW ROTATION DRIVE END**  
**CONNECT S2 & A1 TOGETHER**  
**CONNECT S1 TO BATTERY TERMINAL**  
**CONNECT A2 TO OTHER BATTERY TERMINAL**  
**CCW ROTATION DRIVE END**  
**SWITCH S1 & S2 CONNECTIONS**

EXTERNAL INVOLUTE SPLINE DATA	SIDE FIT
TYPE OF FIT	16
NUMBER OF TEETH	20 / 40
SPLINE PITCH	30°
PRESSURE ANGLE	.692 REF
BASE DIAMETER	.800 REF
PITCH DIAMETER	.850 - .800
MAJOR DIAMETER (h11)	.746
FORM DIAMETER	.686 -
MINOR DIAMETER (h14)	

**MOTOR WEIGHT 49 LBS**  
**CLASS "H" INSULATION**  
**PERFORMANCE SPEC: 42**

THIS PRINT IS THE PROPERTY OF D&D MOTOR SYSTEMS INC.  
 DO NOT SCALE  
 WORK TO DIMENSIONS  
 TOLERANCES UNLESS OTHERWISE SPECIFIED ARE AS FOLLOWS  
 .XX \_\_\_\_\_ .01  
 .XXX \_\_\_\_\_ .005  
 .XX ROUGH CASTING \_\_\_\_\_ .03  
 HOLES \_\_\_\_\_ -.001 / +.006  
 ANGLES \_\_\_\_\_ 0°30"

<b>D &amp; D MOTOR SYSTEMS INC</b>			
<b>MOTOR OUTLINE</b>			
SIZE	DRAWN DATE	RELEASE DATE	DWG NO. / PART NO.
B	1-5-05		ES-85A-42
SCALE	STF	DRAWN BY	REV DATE
		MJG	