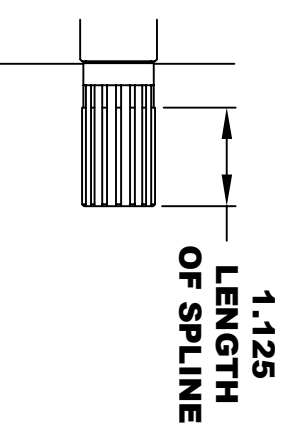
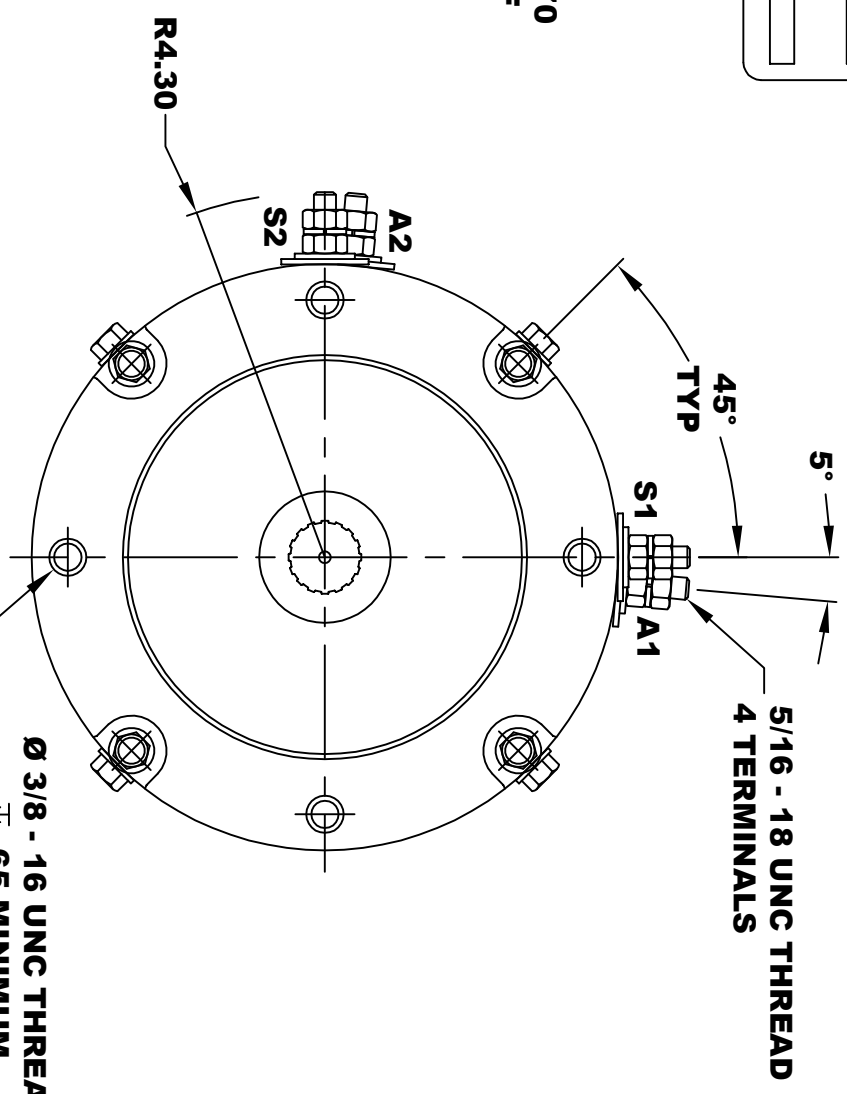
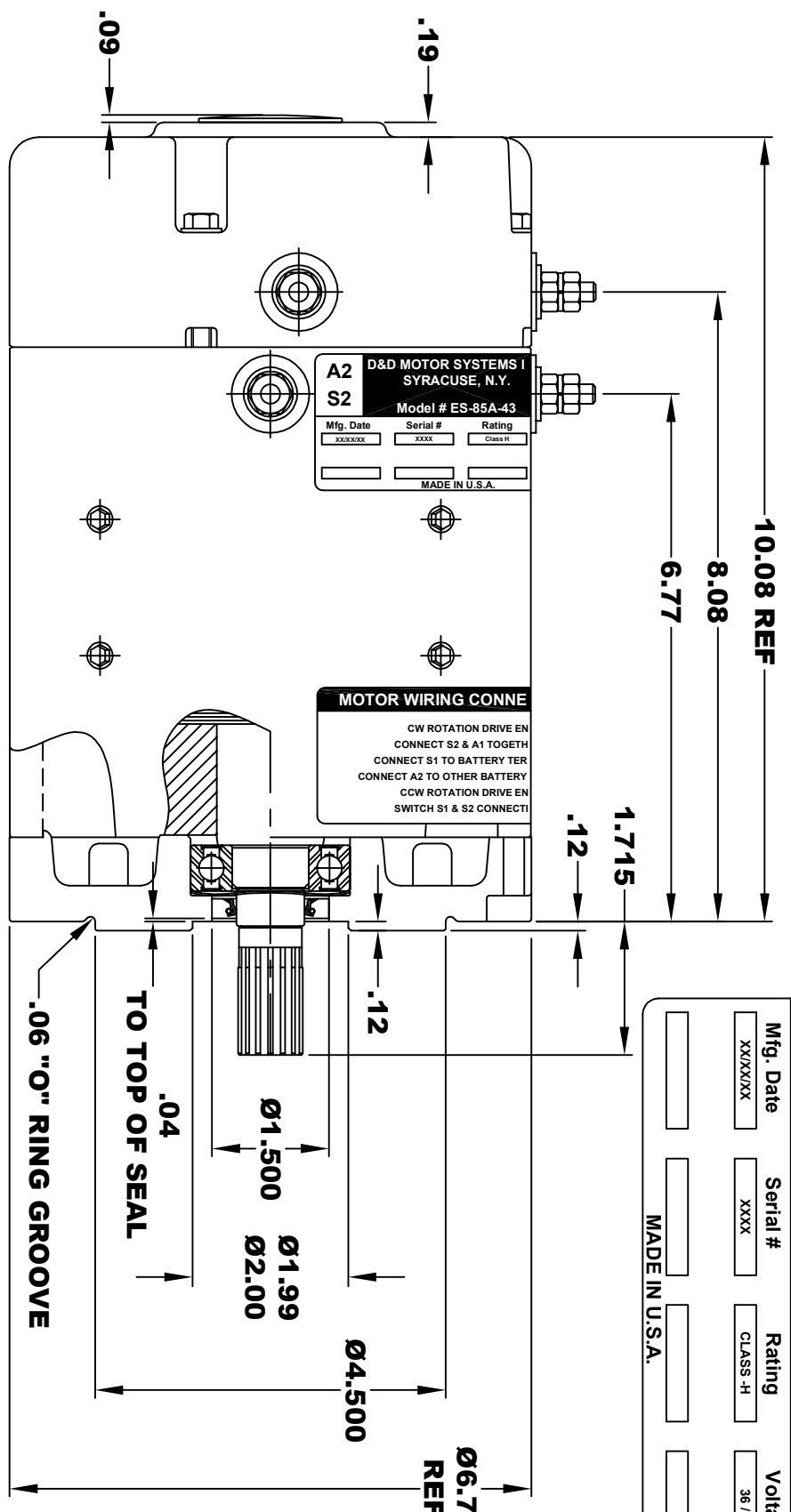


**TORQUE SPECIFICATION FOR
POWER CABLE SECURING TOP NUTS
5/16-18 UNC - 110 IN / LBS MAX**

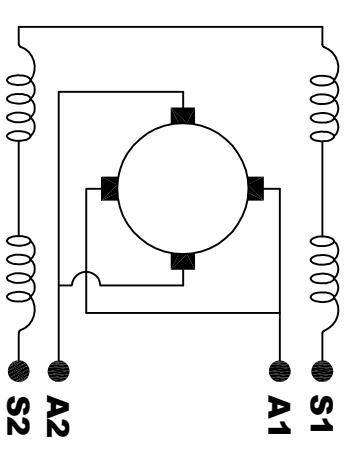
D&D MOTOR SYSTEMS INC.			
SYRACUSE N.Y.			
Model # ES-85A-43			
A2	S2	A1	S1
Mfg. Date	Serial #	Rating	Voltage
XX/XX/XX	XXXX	CLASS -H	36 / 48
MADE IN U.S.A.			



EXTERNAL INVOLUTE SPLINE DATA	SIDE FIT
TYPE OF FIT	16
NUMBER OF TEETH	20 / 40
SPLINE PITCH	30°
PRESSURE ANGLE	.692 REF
BASE DIAMETER	.800 REF
PITCH DIAMETER	.850 - .800
MAJOR DIAMETER (h11)	.746
FORM DIAMETER	.686 -
MINOR DIAMETER (h14)	

**MOTOR WEIGHT 49 LBS
CLASS "H" INSULATION
PERFORMANCE SPEC: 43**

ELECTRICAL WIRING DIAGRAM



**MOTOR WIRING CONNECTIONS:
CW ROTATION DRIVE END
CONNECT S2 & A1 TOGETHER
CONNECT S1 TO BATTERY TERMINAL
CCW ROTATION DRIVE END
CONNECT A2 TO OTHER BATTERY TERMINAL
CONNECT A1 TO OTHER BATTERY TERMINAL
SWITCH S1 & S2 CONNECTIONS**

D & D MOTOR SYSTEMS INC
MOTOR OUTLINE

THIS PRINT IS THE PROPERTY OF D&D MOTOR SYSTEMS INC.
DO NOT SCALE
WORK TO DIMENSIONS
TOLERANCES UNLESS OTHERWISE SPECIFIED ARE AS FOLLOWS
XXX .005
XX .01
.XX ROUGH CASTING .03
HOLES .001 / +.006
ANGLES 0.30"

SIZE	DRAWN DATE	RELEASE DATE	DWG NO. / PART NO.	REV
B	9-29-17		ES-85A-43	
SCALE	STF	DRAWN BY	MJG	REV DATE