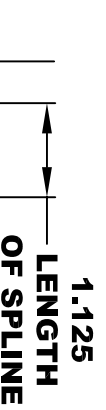
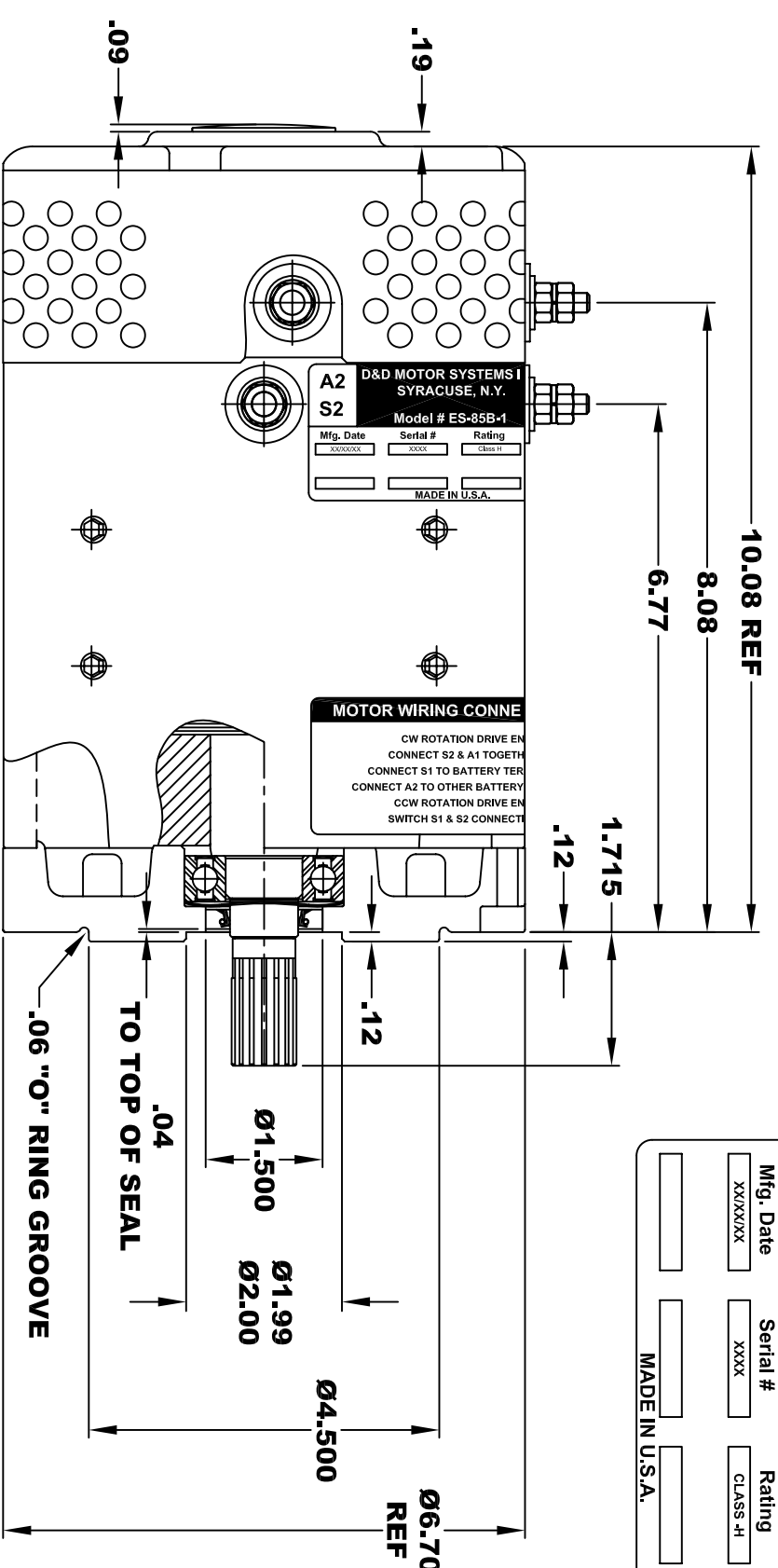


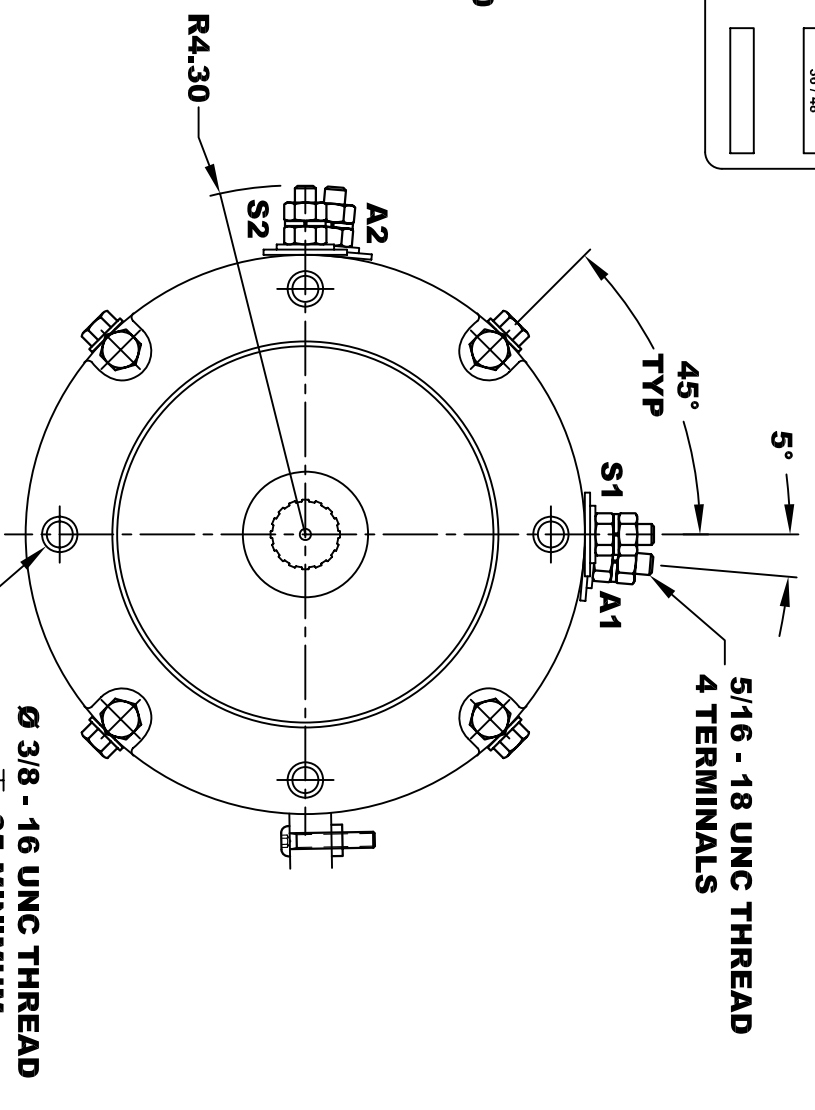
| | | | |
|-----------------------------------|-----------|-----------|-----------|
| D&D MOTOR SYSTEMS INC. | | | |
| SYRACUSE N.Y. | | | |
| Model # ES-85B-1 | | | |
| A2 | S2 | A1 | S1 |
| Mfg. Date | Serial # | Rating | Voltage |
| XXXX/XX | XXXX | CLASS-H | 36 / 48 |
| MADE IN U.S.A. | | | |



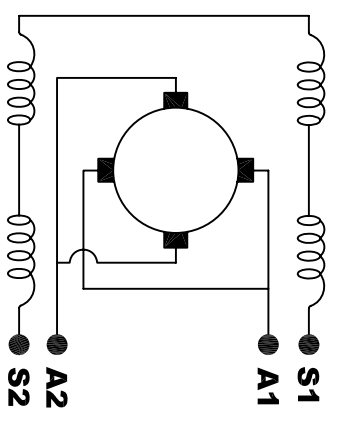
| | |
|--------------------------------------|--------------------|
| EXTERNAL INVOLUTE SPLINE DATA | SIDE FIT |
| TYPE OF FIT | 16 |
| NUMBER OF TEETH | 20 / 40 |
| SPLINE PITCH | 30° |
| PRESSURE ANGLE | .692 REF |
| BASE DIAMETER | .800 REF |
| PITCH DIAMETER | .850 - .800 |
| MAJOR DIAMETER (h11) | .746 |
| FORM DIAMETER | .686 - |
| MINOR DIAMETER (h14) | |

MOTOR WEIGHT 49 LBS
CLASS "H" INSULATION
PERFORMANCE SPEC: 1

TORQUE SPECIFICATION FOR POWER CABLE SECURING TOP NUTS
5/16-18 UNC - 110 IN / LBS MAX



ELECTRICAL WIRING DIAGRAM



MOTOR WIRING CONNECTIONS:
CW ROTATION DRIVE END
CONNECT S2 & A1 TOGETHER
CONNECT S1 TO BATTERY TERMINAL
CONNECT A2 TO OTHER BATTERY TERMINAL
CCW ROTATION DRIVE END
SWITCH S1 & S2 CONNECTIONS

D & D MOTOR SYSTEMS INC

MOTOR OUTLINE

THIS PRINT IS THE PROPERTY OF D&D MOTOR SYSTEMS INC.
 DO NOT SCALE
 WORK TO DIMENSIONS
 TOLERANCES UNLESS OTHERWISE SPECIFIED ARE AS FOLLOWS
 .XXX .005
 .XX .01
 .XX ROUGH CASTING .03
 HOLES -.001 / +.006
 ANGLES 0°30"

| | | | | |
|-------|------------|--------------|--------------------|----------|
| SIZE | DRAWN DATE | RELEASE DATE | DWG NO. / PART NO. | REV |
| B | 2-6-07 | | ES-85B-1 | |
| SCALE | STF | DRAWN BY | MJG | REV DATE |