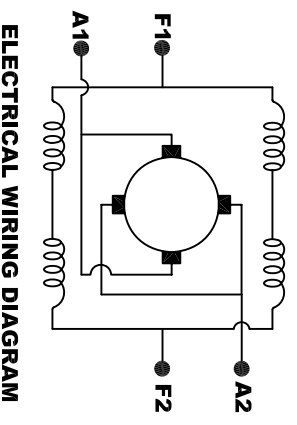
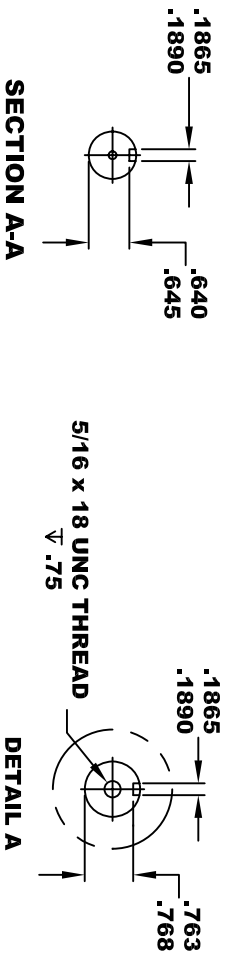
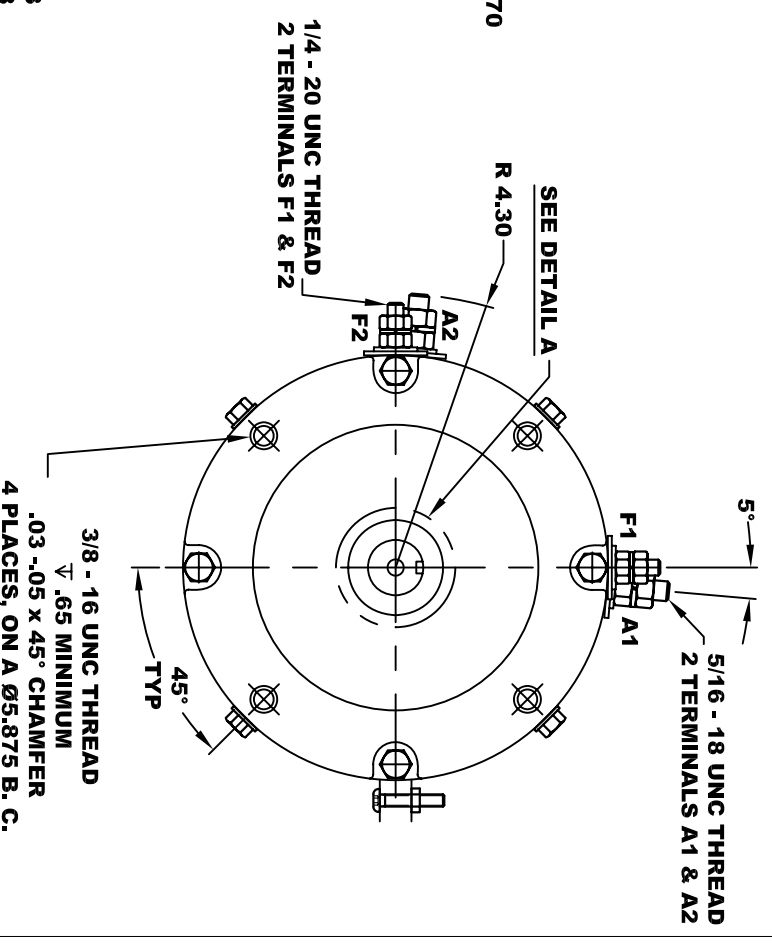
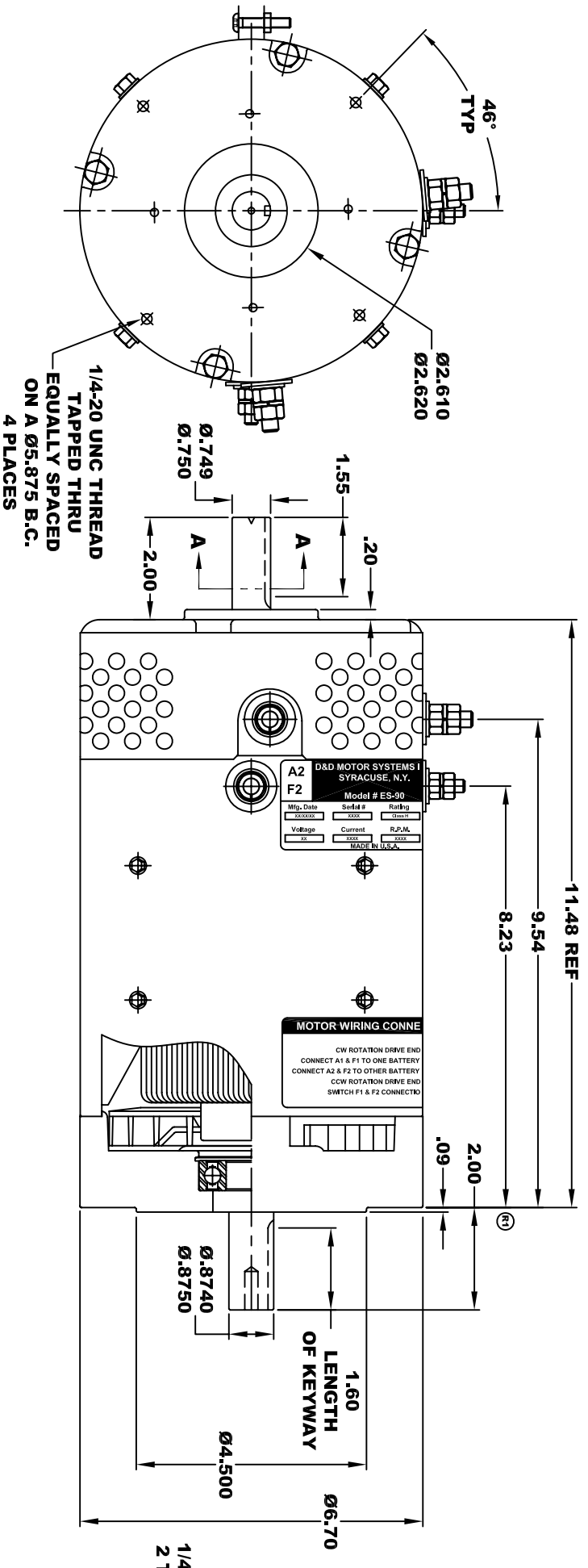


D&D MOTOR SYSTEMS INC. SYRACUSE N.Y.		Model # ES-90	
A2	F2	A1	F1
Mfg. Date	Serial #	Rating	Duty
XXXXXX	XXXX	CLASS-H	S2-XX-MIN
Voltage	Current	R.P.M.	H.P.
XX	XXXX	XXXX	XXXX
	MADE IN U.S.A.		

**TORQUE SPECIFICATION FOR
POWER CABLE SECURING TOP NUTS**
5/16-18 UNC (A1 / A2) - 110 IN / LBS MAX
1/4-20 UNC (F1 / F2) - 50 IN / LBS MAX



MOTOR WIRING CONNECTIONS:
CW ROTATION DRIVE END
CONNECT A1 & F1 TO ONE BATTERY TERMINAL
CCW ROTATION DRIVE END
CONNECT A2 & F2 TO OTHER BATTERY TERMINAL
SWITCH F1 & F2 CONNECTIONS

MOTOR WEIGHT: 58 LBS
CLASS "H" INSULATION
PERFORMANCE SPEC: 10

D & D MOTOR SYSTEMS INC

MOTOR OUTLINE

THIS PRINT IS THE PROPERTY OF D&D MOTOR SYSTEMS INC.
DO NOT SCALE
WORK TO DIMENSIONS
TOLERANCES UNLESS OTHERWISE SPECIFIED ARE AS FOLLOWS
 .XX _____ .01
 .XXX _____ .005
 .XX ROUGH CASTING _____ .03
 HOLES _____ -.001 / +.006
 ANGLES _____ 0°30"

SIZE	DRAWN DATE	RELEASE DATE	DWG NO. / PART NO.	REV
B	12-10-03		ES-90	R1
SCALE	STF	DRAWN BY	MJG	REV DATE
				1-9-04