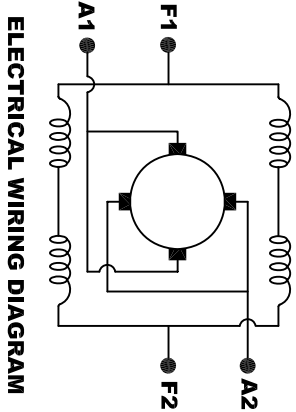
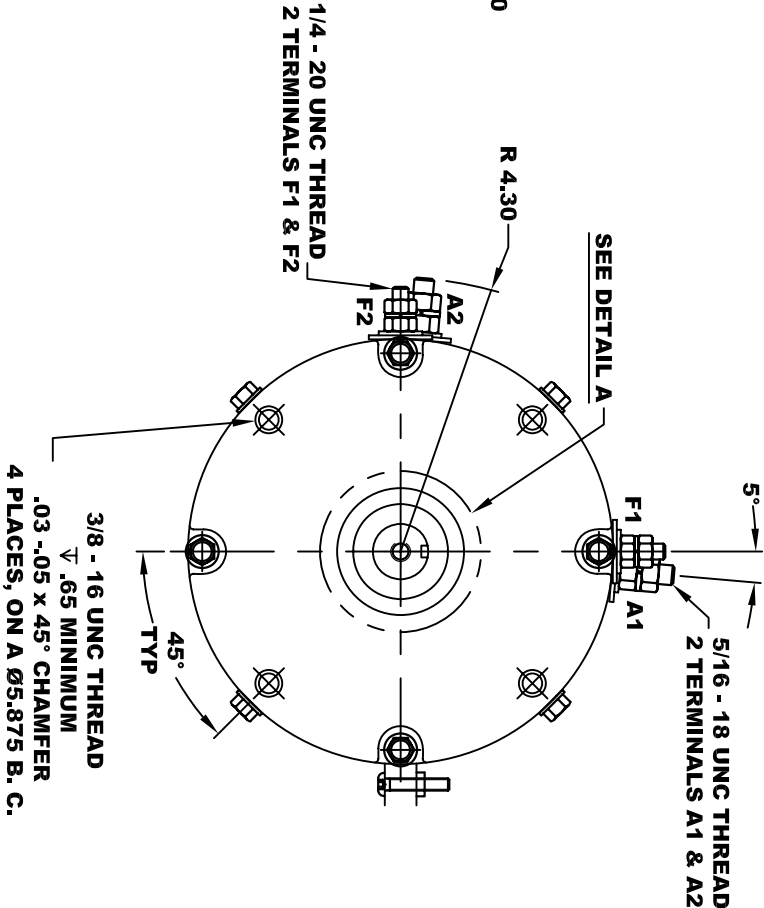
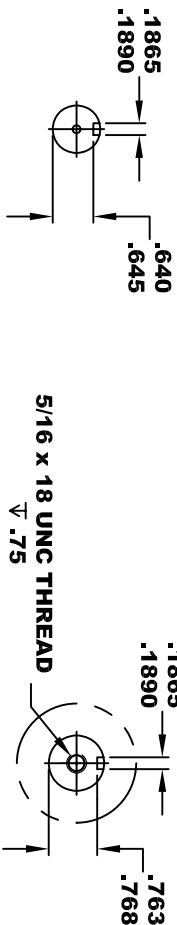
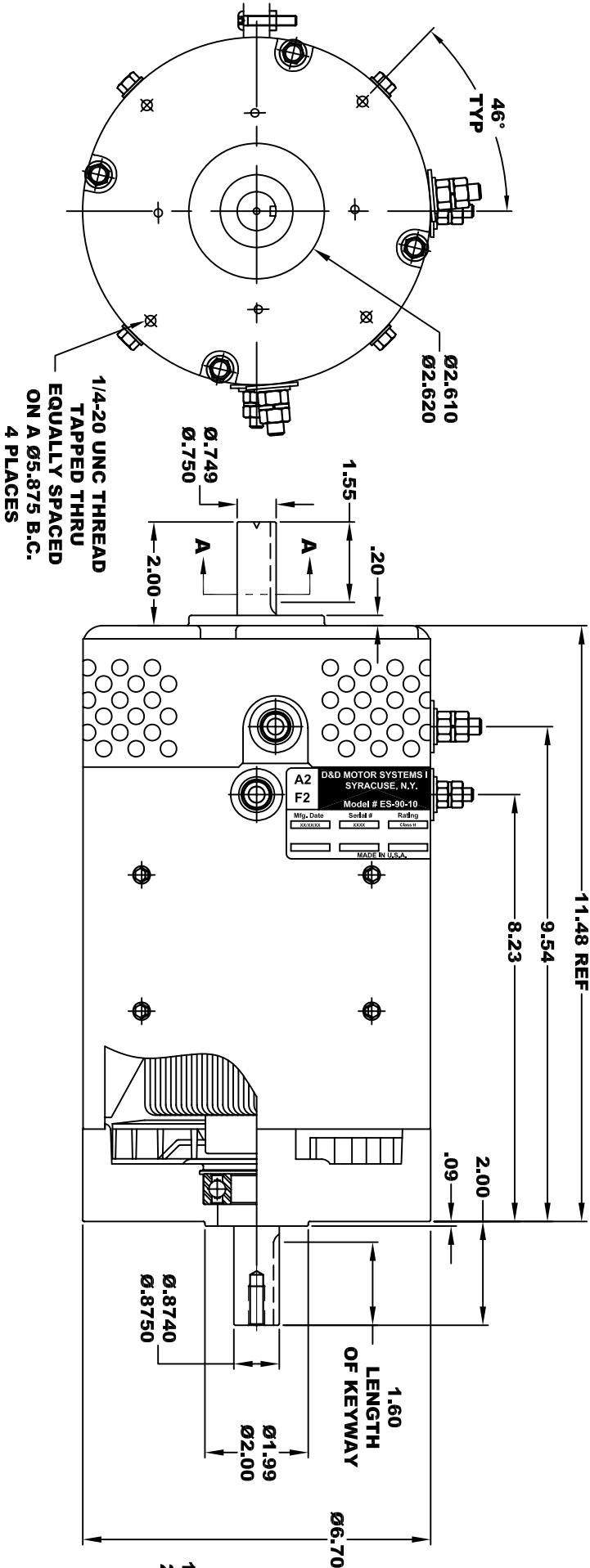


D&D MOTOR SYSTEMS INC. SYRACUSE N.Y.					
A2 F2	Model # ES-90-10				A1 F1
Mfg. Date	Serial #	Rating	Voltage		
XXXXXX	XXXX	CLASS-H	XX		
			MADE IN U.S.A.		

**TORQUE SPECIFICATION FOR
POWER CABLE SECURING TOP NUTS**
5/16-18 UNC (A1 / A2) - 110 IN / LBS MAX
1/4-20 UNC (F1 / F2) - 50 IN / LBS MAX



MOTOR WIRING CONNECTIONS:
CW ROTATION DRIVE END
CONNECT A1 & F1 TO ONE BATTERY TERMINAL
CONNECT A2 & F2 TO OTHER BATTERY TERMINAL
CCW ROTATION DRIVE END
SWITCH F1 & F2 CONNECTIONS

MOTOR WEIGHT: 58 LBS
CLASS "H" INSULATION
PERFORMANCE SPEC: 10

THIS PRINT IS THE PROPERTY OF D&D MOTOR SYSTEMS INC.					
DO NOT SCALE					
WORK TO DIMENSIONS					
TOLERANCES UNLESS OTHERWISE SPECIFIED ARE AS FOLLOWS					
.XX _____ .01					
.XXX _____ .005					
.XX ROUGH CASTING _____ .03					
HOLES _____ -.001 / +.006					
ANGLES _____ 0°30"					
D & D MOTOR SYSTEMS INC					
MOTOR OUTLINE					
SIZE	DRAWN DATE	RELEASE DATE	DWG NO. / PART NO.	REV	
B	6-24-10		ES-90-10		
SCALE	STF	DRAWN BY	MJG	REV DATE	