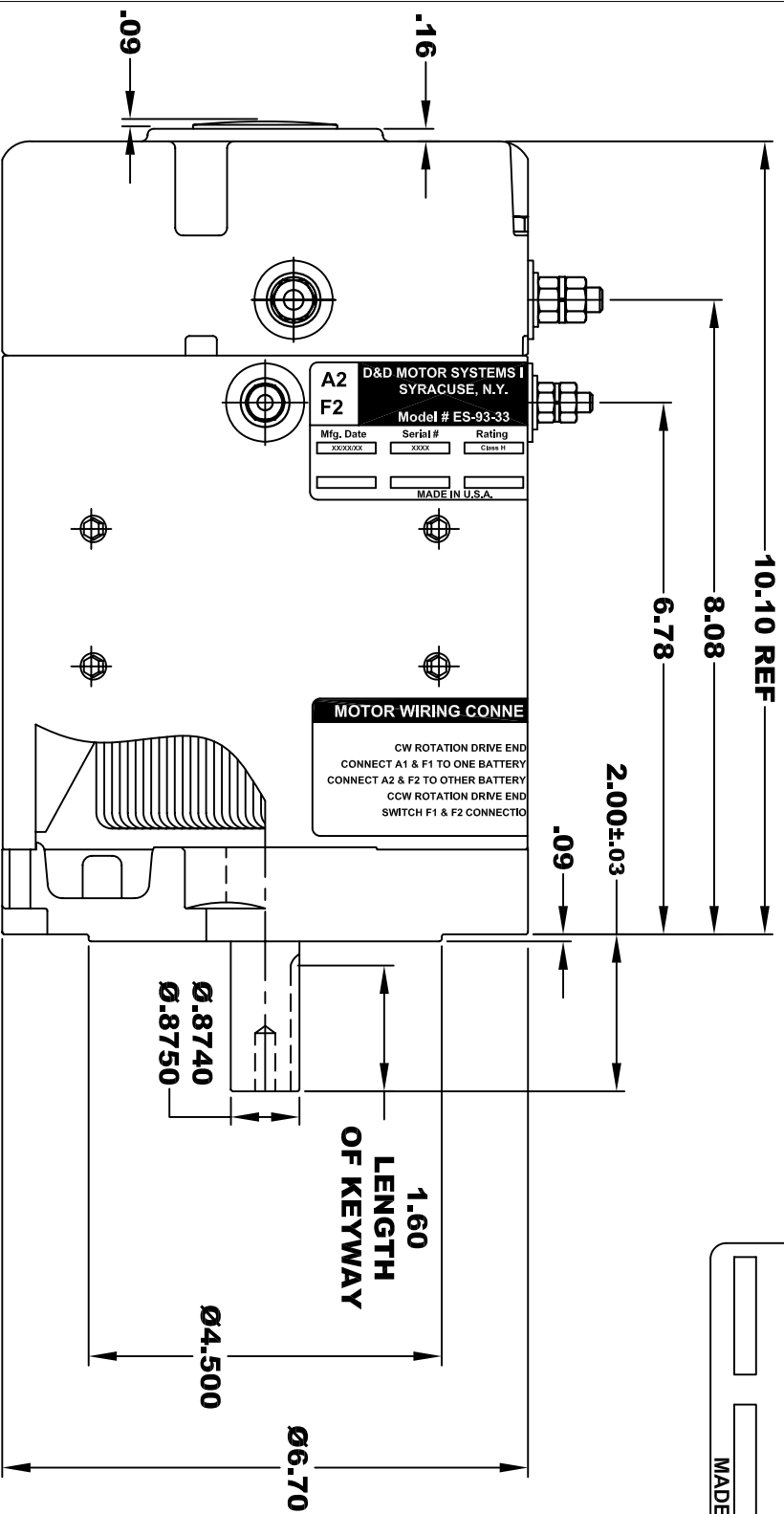
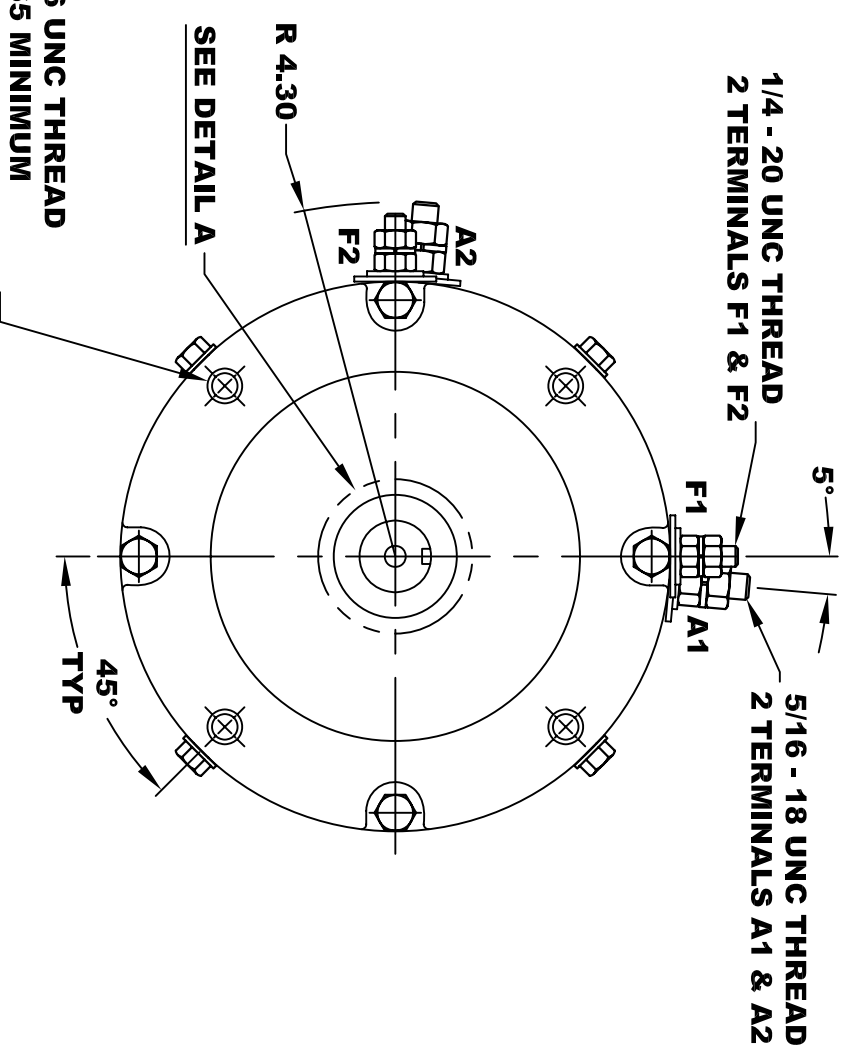


<b>D&amp;D MOTOR SYSTEMS INC.</b>			
SYRACUSE N.Y.			
<b>A2</b>	<b>Model # ES-93-33</b>		<b>A1</b>
<b>F2</b>	Mfg. Date	Serial #	Rating
	XX/XX/XX	XXXX	CLASS -H
			Voltage
			XX
			MADE IN U.S.A.

**TORQUE SPECIFICATION FOR  
POWER CABLE SECURING TOP NUTS**  
5/16-18 UNC (A1 / A2) - 110 IN / LBS MAX  
1/4-20 UNC (F1 / F2) - 50 IN / LBS MAX

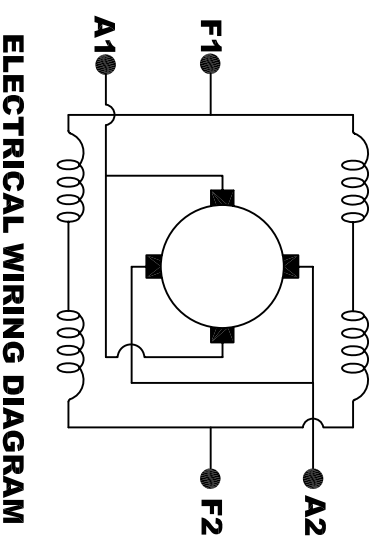


**3/8 - 16 UNC THREAD**  
▽ .65 MINIMUM  
.03 -.05 x 45° CHAMFER  
4 PLACES, ON A Ø5.875 B. C.



**5/16 x 18 UNC THREAD**  
▽ .75  
**DETAIL A**

**MOTOR WEIGHT: 51 LBS**  
**CLASS "H" INSULATION**  
**PERFORMANCE SPEC: 33**



**ELECTRICAL WIRING DIAGRAM**

**MOTOR WIRING CONNECTIONS:**  
**CW ROTATION DRIVE END**  
**CONNECT A1 & F1 TO ONE BATTERY TERMINAL**  
**CONNECT A2 & F2 TO OTHER BATTERY TERMINAL**  
**CCW ROTATION DRIVE END**  
**SWITCH F1 & F2 CONNECTIONS**

THIS PRINT IS THE PROPERTY OF D&D MOTOR SYSTEMS INC.  
DO NOT SCALE  
WORK TO DIMENSIONS  
TOLERANCES UNLESS OTHERWISE SPECIFIED ARE AS FOLLOWS

.XX \_\_\_\_\_ .01  
.XXX \_\_\_\_\_ .005  
.XX ROUGH CASTING \_\_\_\_\_ .03  
HOLES \_\_\_\_\_ -.001 / +.006  
ANGLES \_\_\_\_\_ 0°30"

<b>D &amp; D MOTOR SYSTEMS INC</b>			
<b>MOTOR OUTLINE</b>			
SIZE	DRAWN DATE	RELEASE DATE	DWG NO. / PART NO.
B	11-16-05		ES-93-33
SCALE	DRAWN BY		REV DATE
STF	MJG		