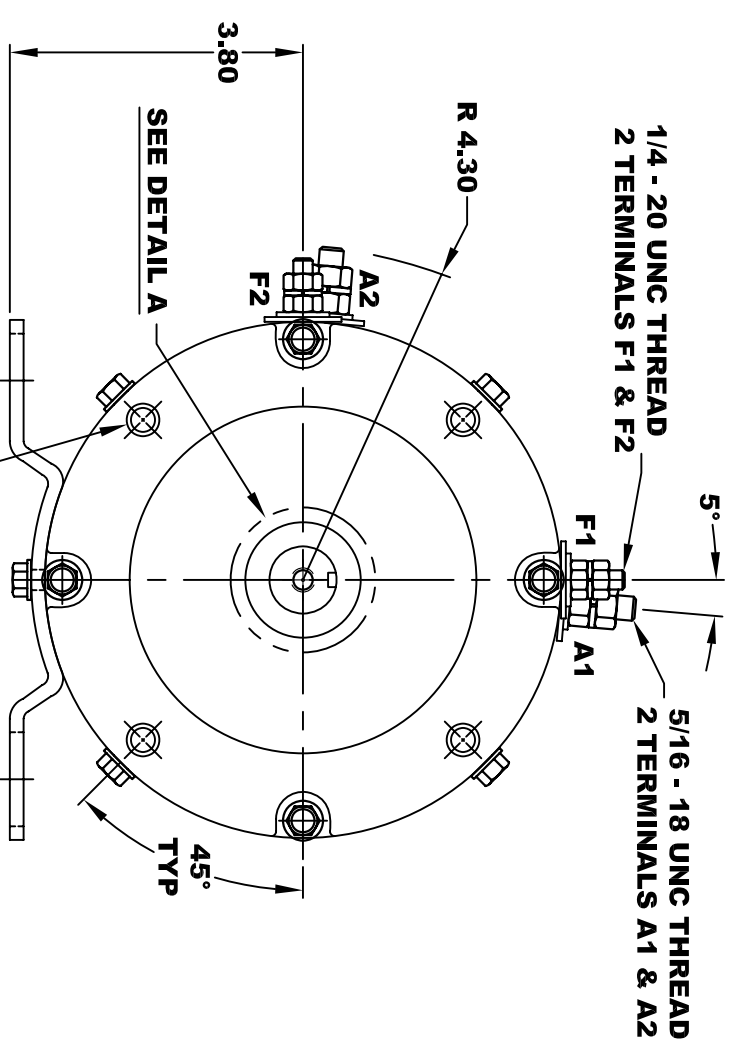
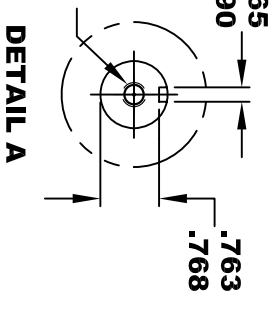
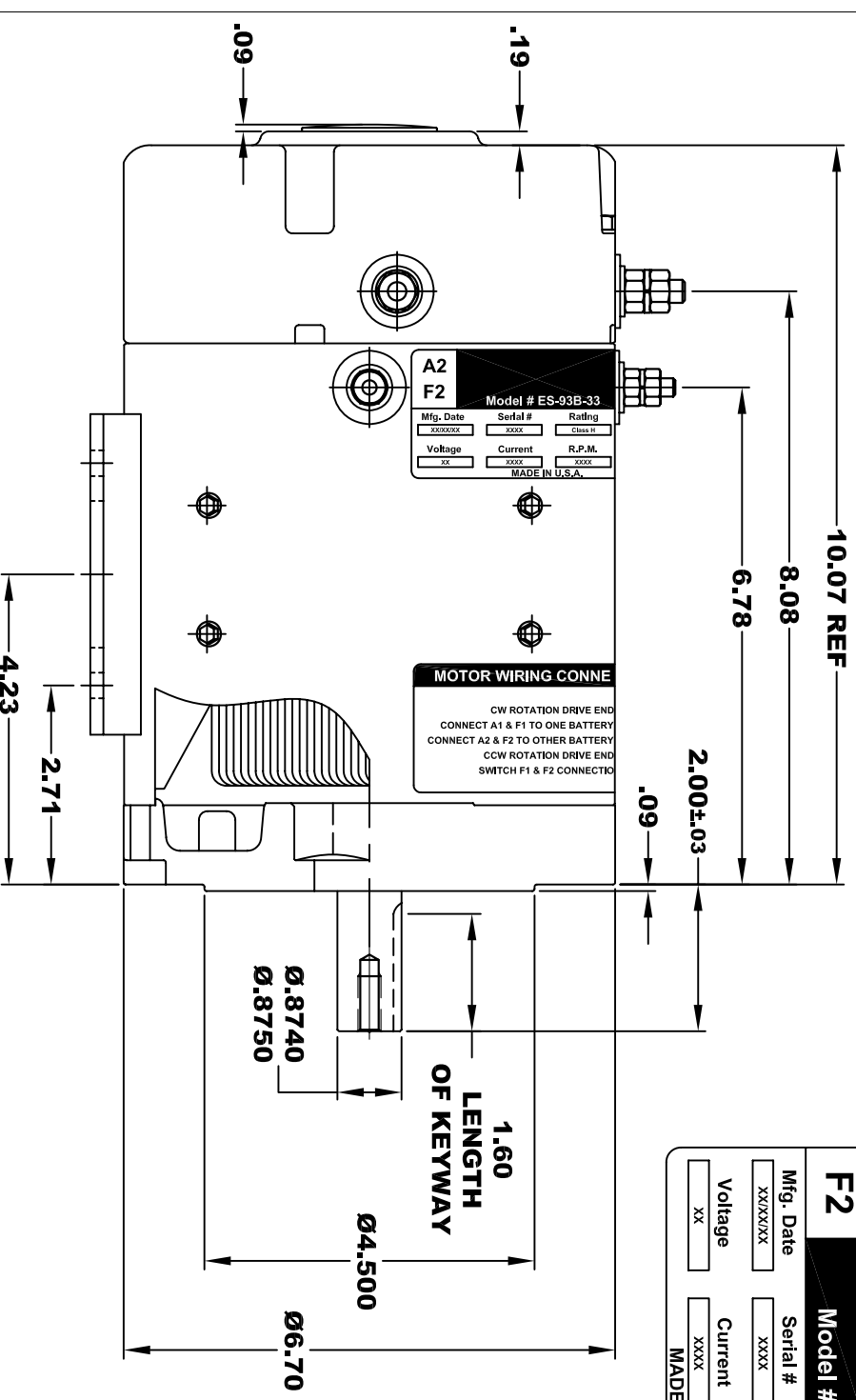
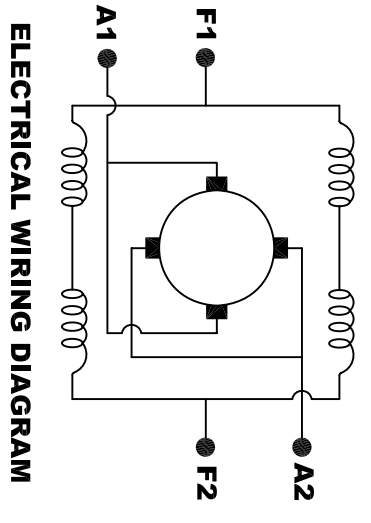


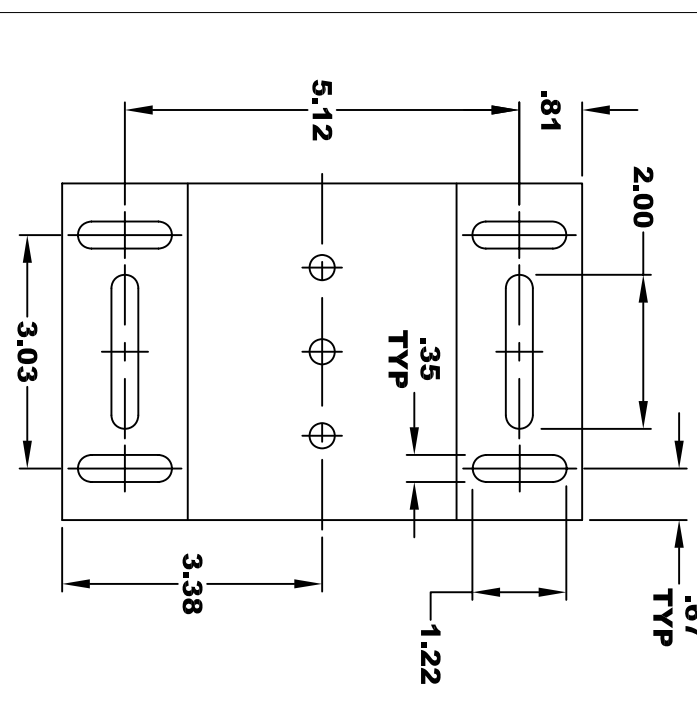
| | | | | |
|-----------|--------------------------|----------|-----------|-----------|
| A2 | Model # ES-93B-33 | | | A1 |
| F2 | Mfg. Date | Serial # | Rating | Duty |
| | XXXXXX | XXXX | CLASS -H- | S2-XX MIN |
| | Voltage | Current | R.P.M. | H.P. |
| | XX | XXXX | XXXX | XX |
| | MADE IN U.S.A. | | | |



TORQUE SPECIFICATION FOR POWER CABLE SECURING TOP NUTS
 5/16-18 UNC (A1 / A2) - 110 IN / LBS MAX
 1/4-20 UNC (F1 / F2) - 50 IN / LBS MAX



MOTOR WIRING CONNECTIONS:
CW ROTATION DRIVE END
 CONNECT A1 & F1 TO ONE BATTERY TERMINAL
 CONNECT A2 & F2 TO OTHER BATTERY TERMINAL
CCW ROTATION DRIVE END
 SWITCH F1 & F2 CONNECTIONS



MOTOR WEIGHT: 51 LBS
CLASS "H" INSULATION
PERFORMANCE SPEC: 33

DO NOT SCALE
 WORK TO DIMENSIONS
 TOLERANCES UNLESS OTHERWISE SPECIFIED ARE AS FOLLOWS

| | |
|-------------------|---------------|
| .XX | .01 |
| .XXX | .005 |
| .XX ROUGH CASTING | .03 |
| HOLES | -.001 / +.006 |
| ANGLES | 0°30" |

| | | | |
|----------------------|------------|--------------|--------------------|
| MOTOR OUTLINE | | | |
| SIZE | DRAWN DATE | RELEASE DATE | DWG NO. / PART NO. |
| B | 1-13-10 | | ES-93B-33 |
| SCALE | STF | DRAWN BY | MJG |
| | | | REV DATE |