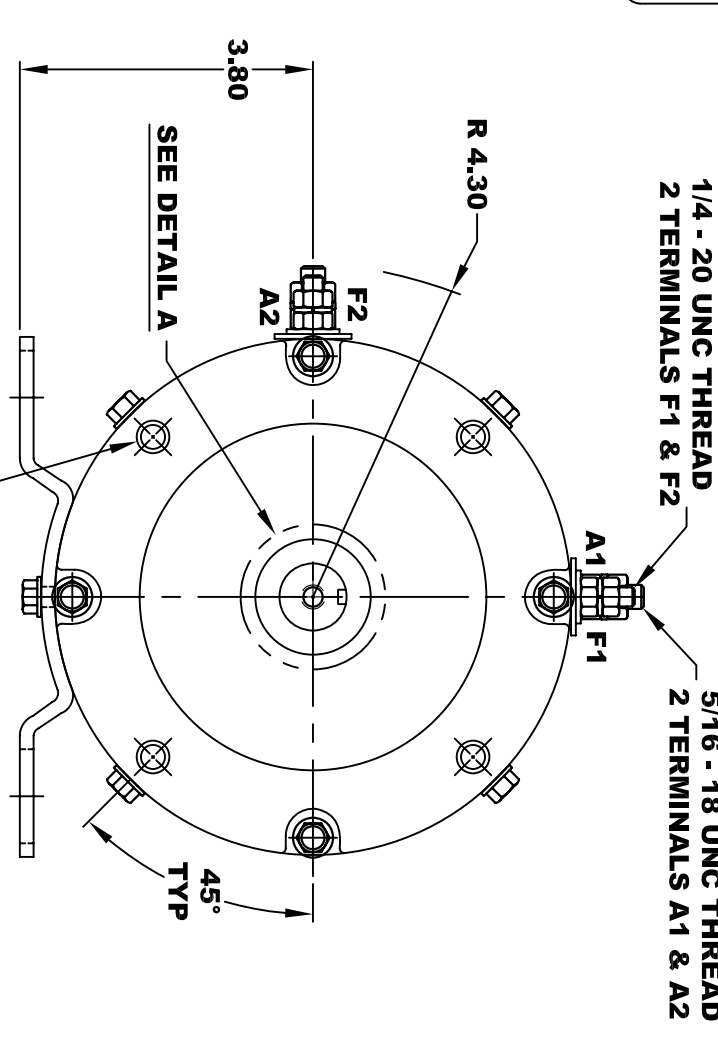
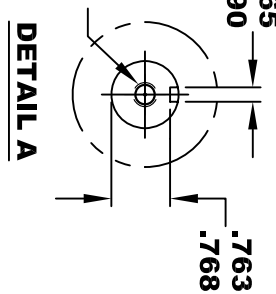
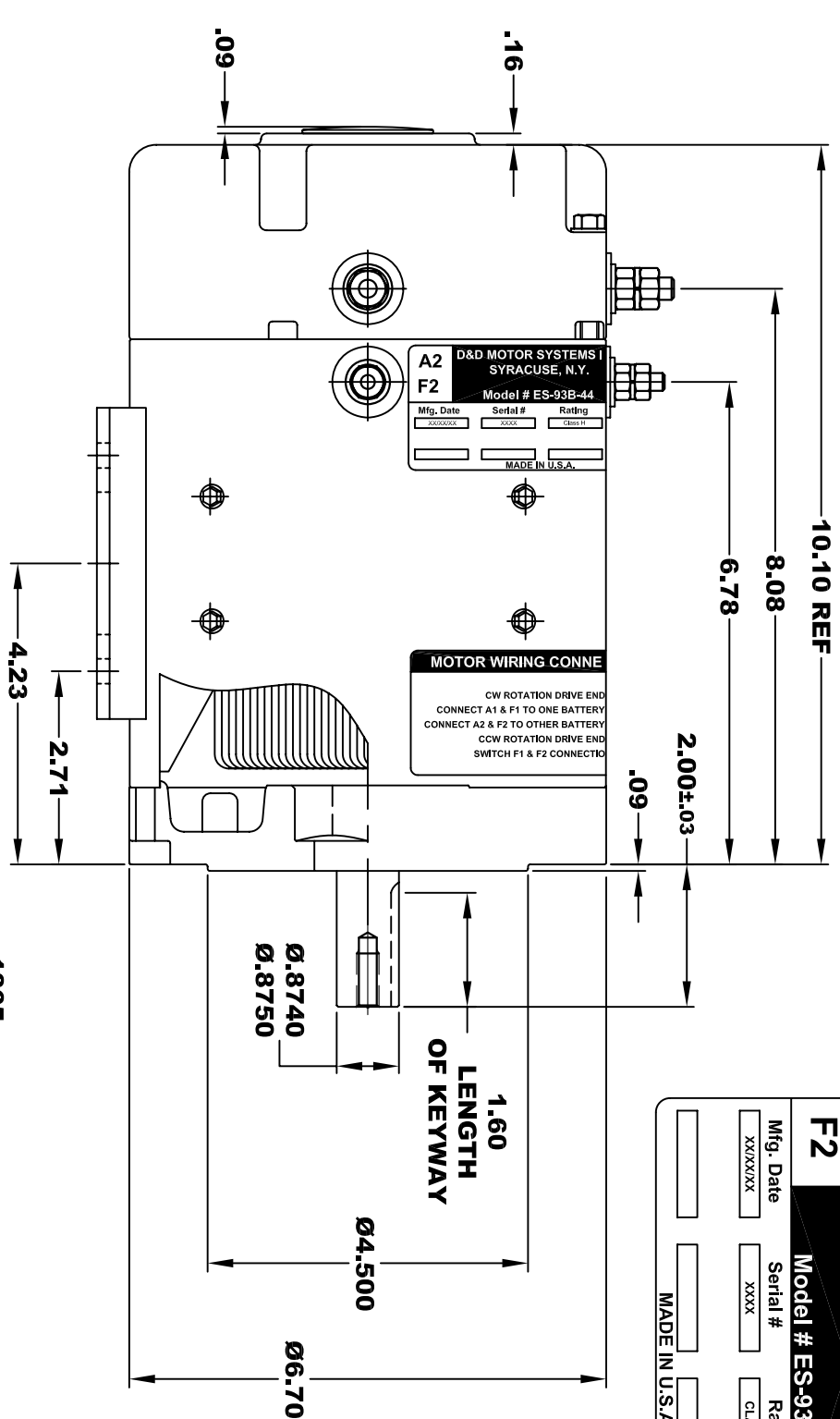
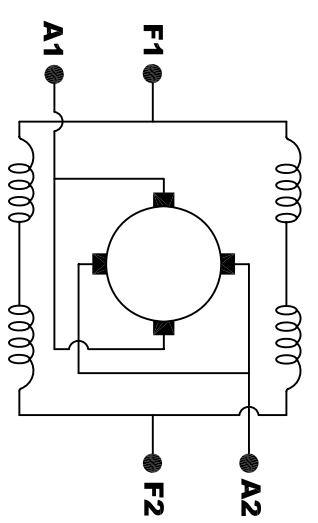


| | | | |
|-----------------------------------|--------------------------|----------|----------------|
| D&D MOTOR SYSTEMS INC. | | | |
| SYRACUSE N.Y. | | | |
| A2 | Model # ES-93B-44 | | A1 |
| F2 | Mfg. Date | Serial # | Rating |
| | XXXXXX | XXXX | CLASS - H |
| | | | Voltage |
| | | | XX |
| | | | MADE IN U.S.A. |

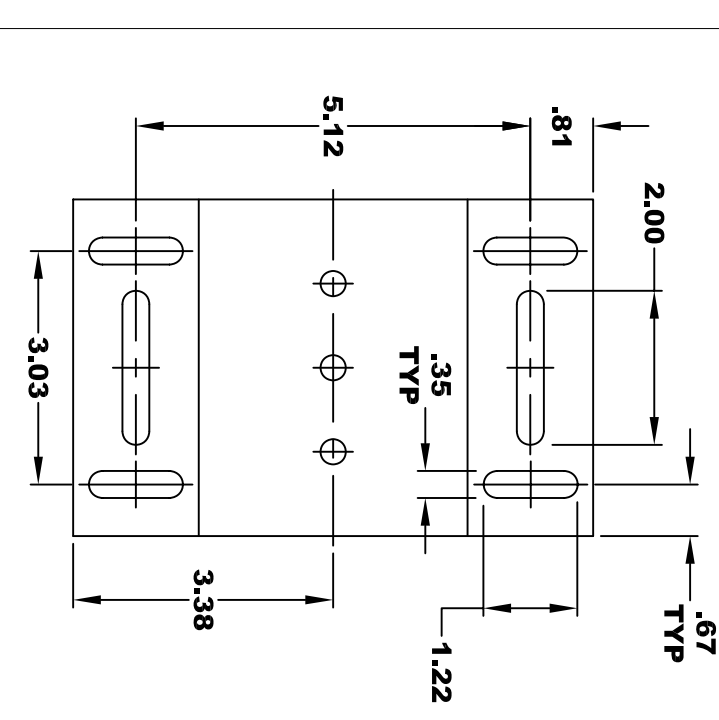


**TORQUE SPECIFICATION FOR
POWER CABLE SECURING TOP NUTS**
 5/16-18 UNC (A1 / A2) - 110 IN / LBS MAX
 1/4-20 UNC (F1 / F2) - 50 IN / LBS MAX



ELECTRICAL WIRING DIAGRAM

MOTOR WIRING CONNECTIONS:
CCW ROTATION DRIVE END
 CONNECT A1 & F1 TO ONE BATTERY TERMINAL
 CONNECT A2 & F2 TO OTHER BATTERY TERMINAL
CCW ROTATION DRIVE END
 SWITCH F1 & F2 CONNECTIONS



MOTOR WEIGHT: 51 LBS
CLASS "H" INSULATION
PERFORMANCE SPEC: 44

THIS PRINT IS THE PROPERTY OF D&D MOTOR SYSTEMS INC.
 DO NOT SCALE
 WORK TO DIMENSIONS
 TOLERANCES UNLESS OTHERWISE SPECIFIED ARE AS FOLLOWS
 .XX _____ .01
 .XXX _____ .005
 .XX ROUGH CASTING _____ .03
 HOLES _____ -.001 / +.006
 ANGLES _____ 0°30"

| | | | |
|------------------------------------|------------|--------------|--------------------|
| D & D MOTOR SYSTEMS INC | | | |
| MOTOR OUTLINE | | | |
| SIZE | DRAWN DATE | RELEASE DATE | DWG NO. / PART NO. |
| B | 4-29-08 | | ES-93B-44 |
| SCALE | STF | DRAWN BY | MJG |
| | | | REV DATE |