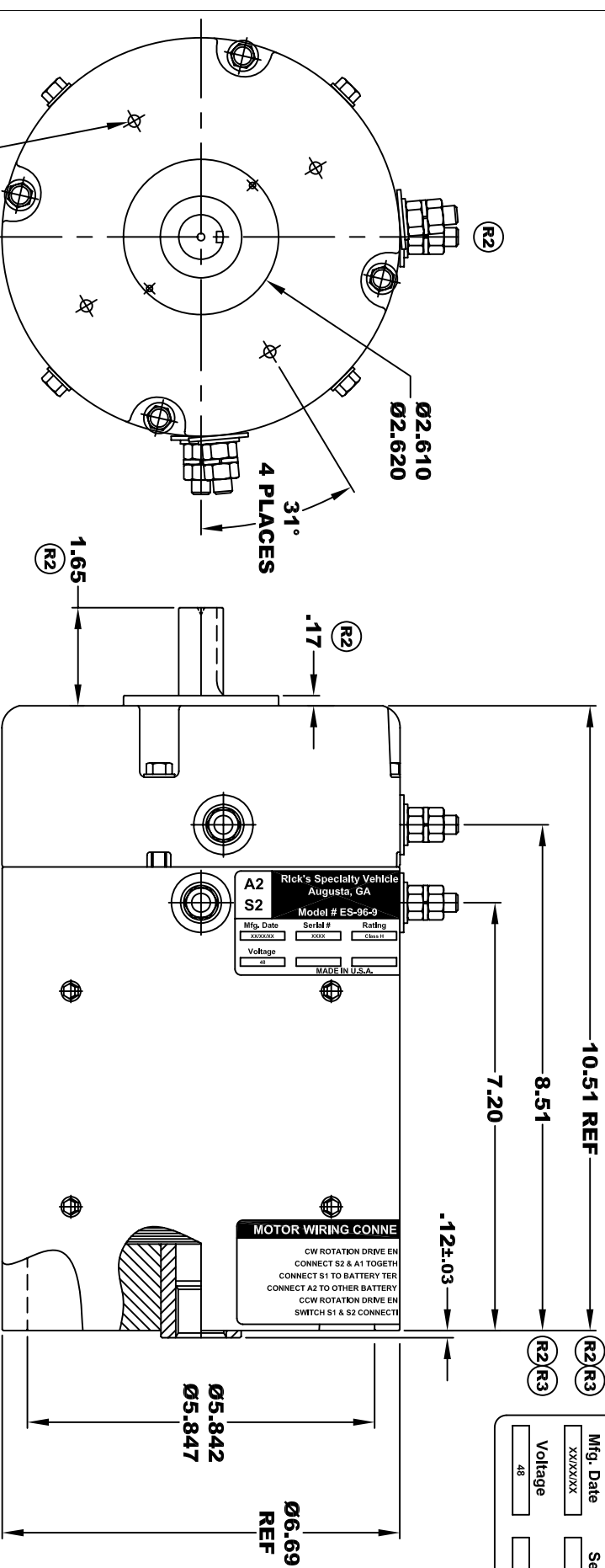


Rick's Specialty Vehicles			
Augusta, GA		Augusta, GA	
A2	S2	A1	S1
Model # ES-96-9			
Mfg. Date	Serial #	Rating	Peak H.P.
XXXXXX	XXXX	CLASS -H	14.0
Voltage	MADE IN U.S.A.		
48			

**TORQUE SPECIFICATION FOR
POWER CABLE SECURING TOP NUTS**
5/16-18 UNC - 110 IN / LBS MAX



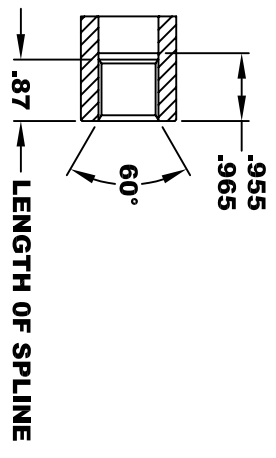
1/4-20 UNC THREAD
TAPPED THRU
EQUALLY SPACED
ON A Ø4.50 B.C.
4 PLACES

LENGTH OF
KEYWAY
1.24
Ø.750

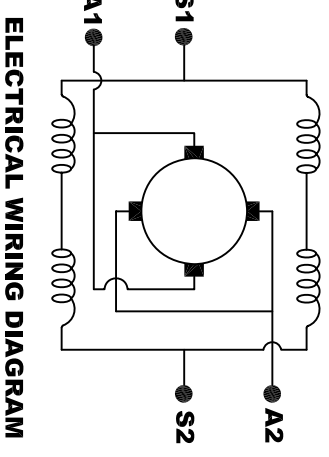
LENGTH OF
KEYWAY
1.865
1.890
Ø.645

**INTERNAL INVOLUTE SPLINE SPECIFICATION
CLASS 5 FILLET ROOT SIDE FIT (PER A.N.S.I. B92.1)**

NO. OF TEETH	19
SPLINE PITCH	24 / 48
PRESSURE ANGLE	45°
BASE Ø	.5597 REF
PITCH Ø	.7916 REF
MAJOR Ø	.850 - .859
FORM Ø	.835
MINOR Ø	.767 - .772
CIRCULAR SPACE WIDTH	.0764
EFFECTIVE SPACE WIDTH	.0738
MAX. DIMENSION BETWEEN TWO PINS	.6714
PIN Ø	.0800
SPLINE HARDNESS TO BE R/C	26-34



MOTOR WEIGHT: 58 LBS
CLASS "H" INSULATION
PERFORMANCE SPEC: 9



MOTOR WIRING CONNECTIONS:
CW ROTATION DRIVE END
CONNECT S2 & A1 TOGETHER
CONNECT S1 TO BATTERY TERMINAL
CONNECT A2 TO OTHER BATTERY TERMINAL
CCW ROTATION DRIVE END
SWITCH S1 & S2 CONNECTIONS

D & D MOTOR SYSTEMS INC

MOTOR OUTLINE

THIS PRINT IS THE PROPERTY OF D&D MOTOR SYSTEMS INC.
DO NOT SCALE
WORK TO DIMENSIONS
TOLERANCES UNLESS OTHERWISE SPECIFIED ARE AS FOLLOWS
.XX .005
.XXX .01
.XX ROUGH CASTING .03
HOLES -.001 / +.006
ANGLES 0°30"

SIZE	DRAWN DATE	RELEASE DATE	DWG NO. / PART NO.	REV
B	7-28-04		ES-96-9	R3
SCALE	STF	DRAWN BY	MJG	REV DATE
				12-6-13