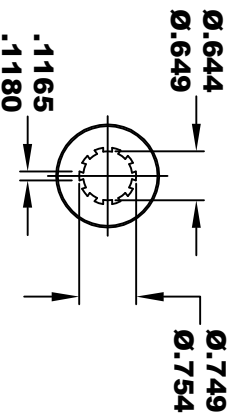
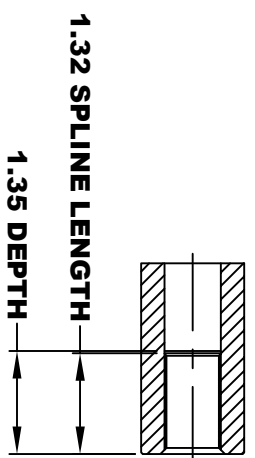
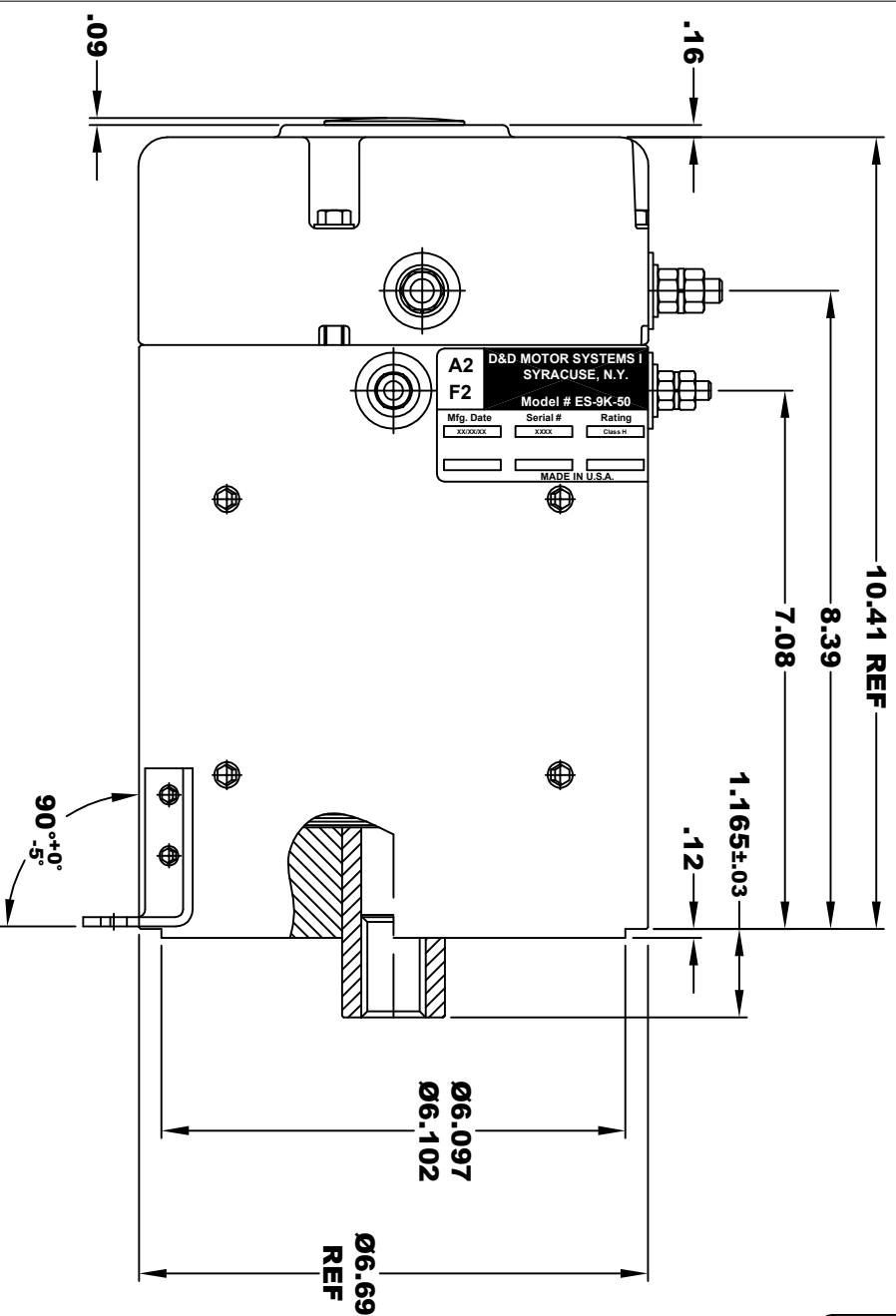
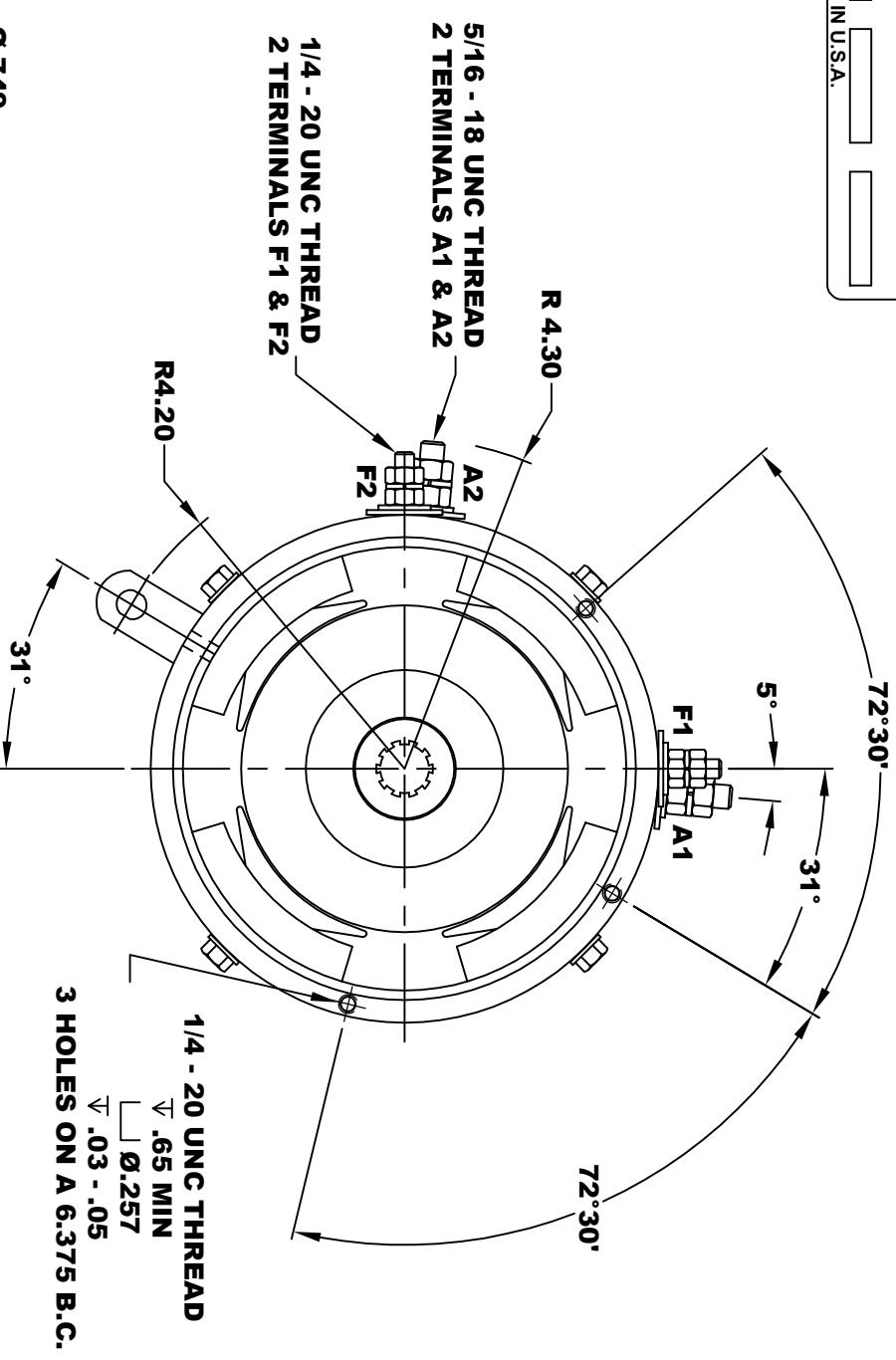


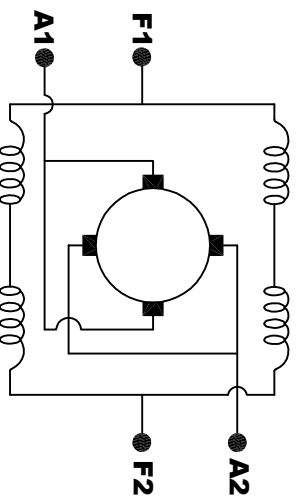
<b>D&amp;D MOTOR SYSTEMS INC.</b>			
<b>SYRACUSE N.Y.</b>			
<b>A2</b>	<b>F2</b>	<b>A1</b>	<b>F1</b>
<b>Model # ES-9K-50</b>			
Mfg. Date	Serial #	Rating	Voltage
XXXXXX	XXXX	CLASS H	XX
MADE IN U.S.A.			



**TORQUE SPECIFICATION FOR  
POWER CABLE SECURING TOP NUTS**  
5/16-18 UNC (A1 / A2) - 110 IN / LBS MAX  
1/4-20 UNC (F1 / F2) - 50 IN / LBS MAX



**MOTOR WEIGHT 57 LBS**  
**CLASS "H" INSULATION**  
**PERFORMANCE SPEC: 50**



**ELECTRICAL WIRING DIAGRAM**

**MOTOR WIRING CONNECTIONS**  
**CW ROTATION DRIVE END**  
**CONNECT A1 & F1 TO ONE BATTERY TERMINAL**  
**CCW ROTATION DRIVE END**  
**CONNECT A2 & F2 TO OTHER BATTERY TERMINAL**  
**SWITCH F1 & F2 CONNECTIONS**

THIS PRINT IS THE PROPERTY OF D&D MOTOR SYSTEMS INC.  
DO NOT SCALE  
WORK TO DIMENSIONS  
TOLERANCES UNLESS OTHERWISE SPECIFIED ARE AS FOLLOWS  
XX .01  
XXX .005  
XX RUGH CASTING .03  
HOLES .001 / +.006  
ANGLES 0.30"

**D & D MOTOR SYSTEMS INC**  
**MOTOR OUTLINE**

SIZE	DRAWN DATE	RELEASE DATE	DWG NO. / PART NO.	REV
B	1-4-19		ES-9K-50	
SCALE	STF	DRAWN BY	MJG	REV DATE