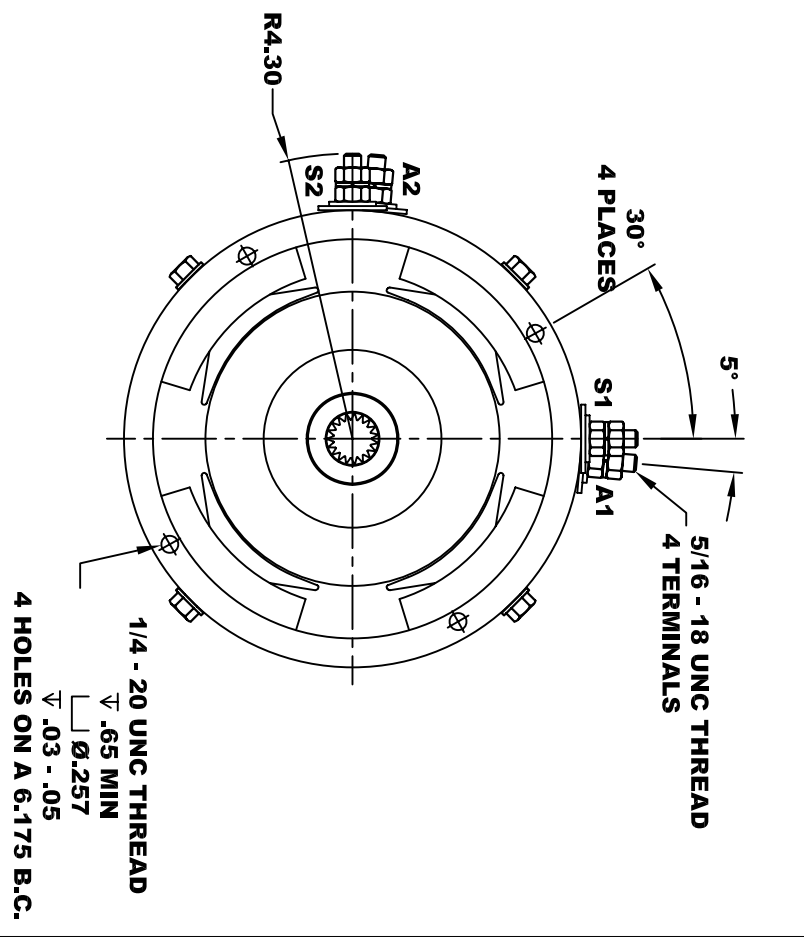
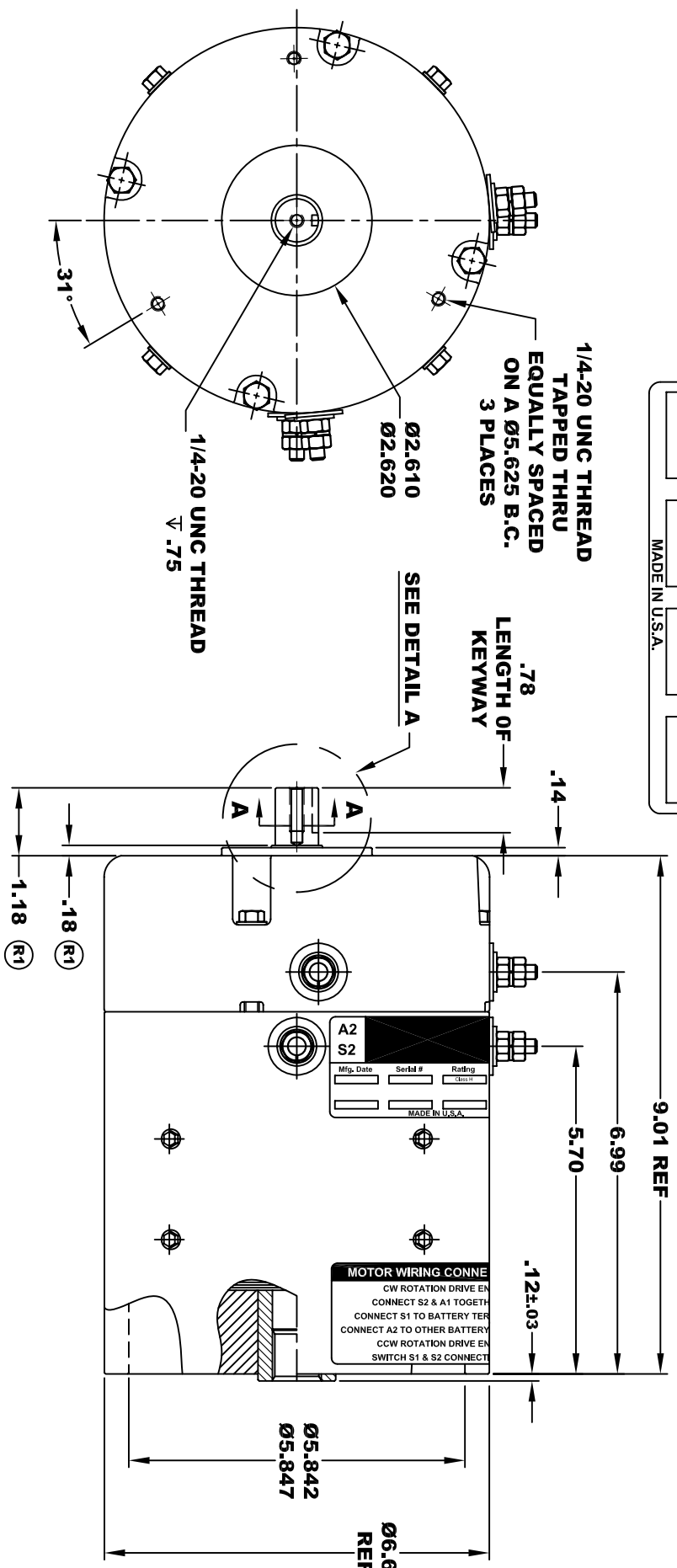


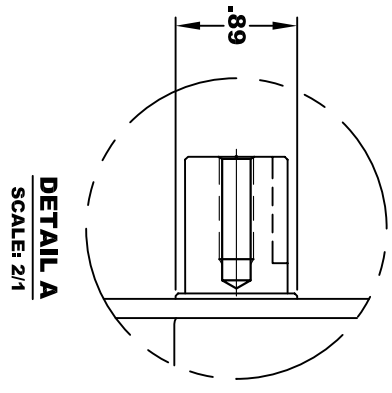
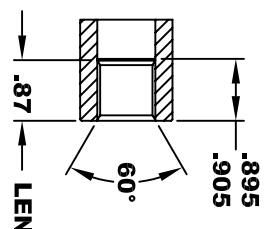
<b>A2</b>	<b>A1</b>		
<b>S2</b>	<b>S1</b>		
Mfg. Date	Serial #	Rating	Voltage
MADE IN U.S.A.			



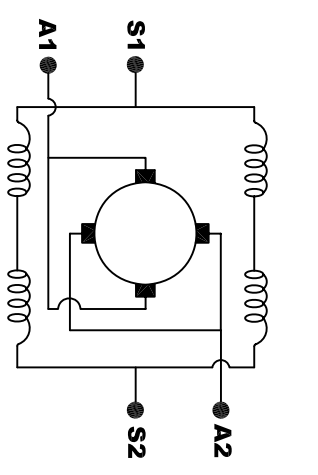
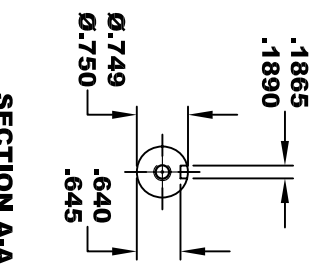
**TORQUE SPECIFICATION FOR  
POWER CABLE SECURING TOP NUTS**  
5/16-18 UNC - 110 IN / LBS MAX

**INTERNAL INVOLUTE SPLINE SPECIFICATION  
CLASS 5 FILLET ROOT SIDE FIT (PER A.N.S.I. B92.1)**

NO. OF TEETH	19
SPLINE PITCH	24 / 48
PRESSURE ANGLE	45°
BASE Ø	.5597 REF
PITCH Ø	.7916 REF
MAJOR Ø	.850 - .859
FORM Ø	.835
MINOR Ø	.767 - .772
CIRCULAR SPACE WIDTH	.0764
EFFECTIVE SPACE WIDTH	.0738
MAX. DIMENSION BETWEEN TWO PINS	.6714
PIN Ø	.0800
SPLINE HARDNESS TO BE R/C 26-34	



**SECTION A-A  
SCALE: 2/1**



**MOTOR WIRING CONNECTIONS:**  
CW ROTATION DRIVE END  
CONNECT S2 & A1 TOGETHER  
CONNECT S1 TO BATTERY TERMINAL  
CONNECT A2 TO OTHER BATTERY TERMINAL  
CCW ROTATION DRIVE END  
SWITCH S1 & S2 CONNECTIONS

**MOTOR WEIGHT: 47 LBS  
CLASS "H" INSULATION  
PERFORMANCE SPEC: XX**

THIS PRINT IS THE PROPERTY OF D&D MOTOR SYSTEMS INC.  
DO NOT SCALE  
WORK TO DIMENSIONS  
TOLERANCES UNLESS OTHERWISE SPECIFIED ARE AS FOLLOWS  
.XX .005  
.XXX .01  
.XX RROUGH CASTING .03  
HOLES .001 / +.006  
ANGLES .030"

**D & D MOTOR SYSTEMS INC  
MOTOR OUTLINE**

SIZE	DRAWN DATE	RELEASE DATE	DWG NO. / PART NO.	REV
B	9-16-05		STROMAG	R1
SCALE	STF	DRAWN BY	MJG	REV DATE
				9-27-05